



Remine

Stellar MLS Member Benefit

What is Remine?

Remine is the real estate industry's leading search portal, featuring consumer and real-time property data, deal services, and more actionable intelligence than any other tool on the market.



Founded in 2015, Remine was created by agents, for agents. It is a core technology in 40 MLS' and used by more than 140,000 agents.



Remine is an MLS search and engagement tool to help agents work efficiently and win more business.

Loralee Rider 10:27 AM

✕ Dismiss

Very cool. This is what I have been looking for. Your development team has done a great job and thought of practically every tool a realtor needs. Your IT team has made it very user friendly. So important to users like me. And you & your training team did a great job facilitating this webinar. And a mobile app too? Client Engage too...Zillow like experience...love it....wow. What more could a girl ask for? P.S. This is really a real estate broker and not a paid testimonial...lol

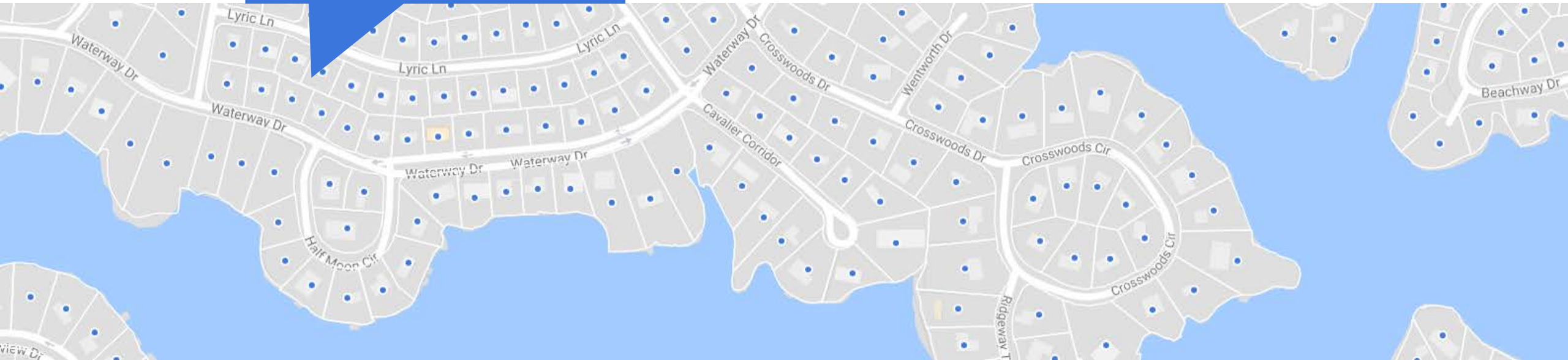
Answer live

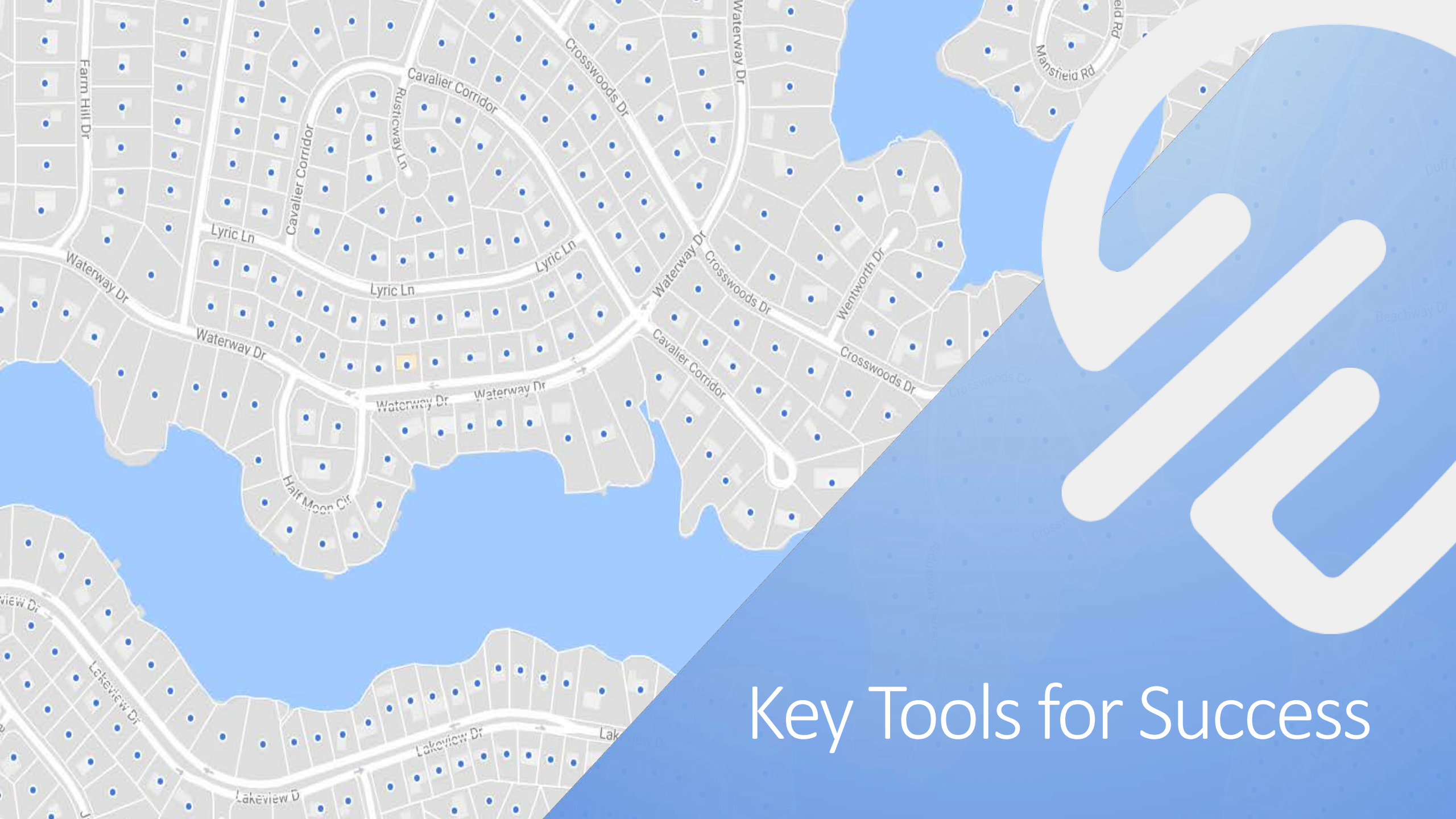
Type answer

Why Remine?

We keep it simple.

1. Everyday Essentials
2. Lead Generation





Key Tools for Success

Daily Dashboard

Your daily cup of everything real estate, so you are prepared for the day!



Insights

Access to centralized daily, local, and market insights/analytics



Personalize Cards

Remove, reorder, and clone cards so that it is personalized to you



Weather

Monitor weather for any zip code

The screenshot displays the 'Daily Dashboard' interface. At the top, it shows the date 'Thursday April 4, 2019' and a weather widget for 'Beverly Hills, CA' with a temperature of '60°'. Below the date is a 'Quick Actions' bar with buttons for 'Create Saved Search', 'Invite Client', 'Contactually', 'LionDesk', 'Add Integration', and 'Add New Card'. The dashboard is divided into several sections: 'Property Notifications' (listing changes for '26337 BEE TREE RD' and '331 N DUNLAP ST'), 'Market Pulse' (showing a table of market activity with columns for status, progress, and average price), 'New Listings' (displaying canceled listings like '5460 WHITE OAK AVE' and '6717 LAKEWOOD DR'), and 'Twitter' (with a search bar). A vertical sidebar on the left contains navigation icons for home, search, favorites, and other functions.

Updates	Average Price
281 Withdrawn	\$933.6K
2000 Active	\$1.2M
2000 New	\$837.5K
1892 Pending	\$709.9K
1471 Active Under Contract	\$784.3K
542 Canceled	\$1M
470 Expired	\$963.2K
2000 Closed	\$797.2K
Average Valuation Estimate	\$800.5K
Absorption Rate	30 Days

CMA 360

CMA 360SM, by Remine, is the first CMA on the market to analyze both MLS and Off-MLS data, providing you with a true 360 perspective.



More Data!

Only Remine's CMA 360 searches both MLS and Off-Market Data.



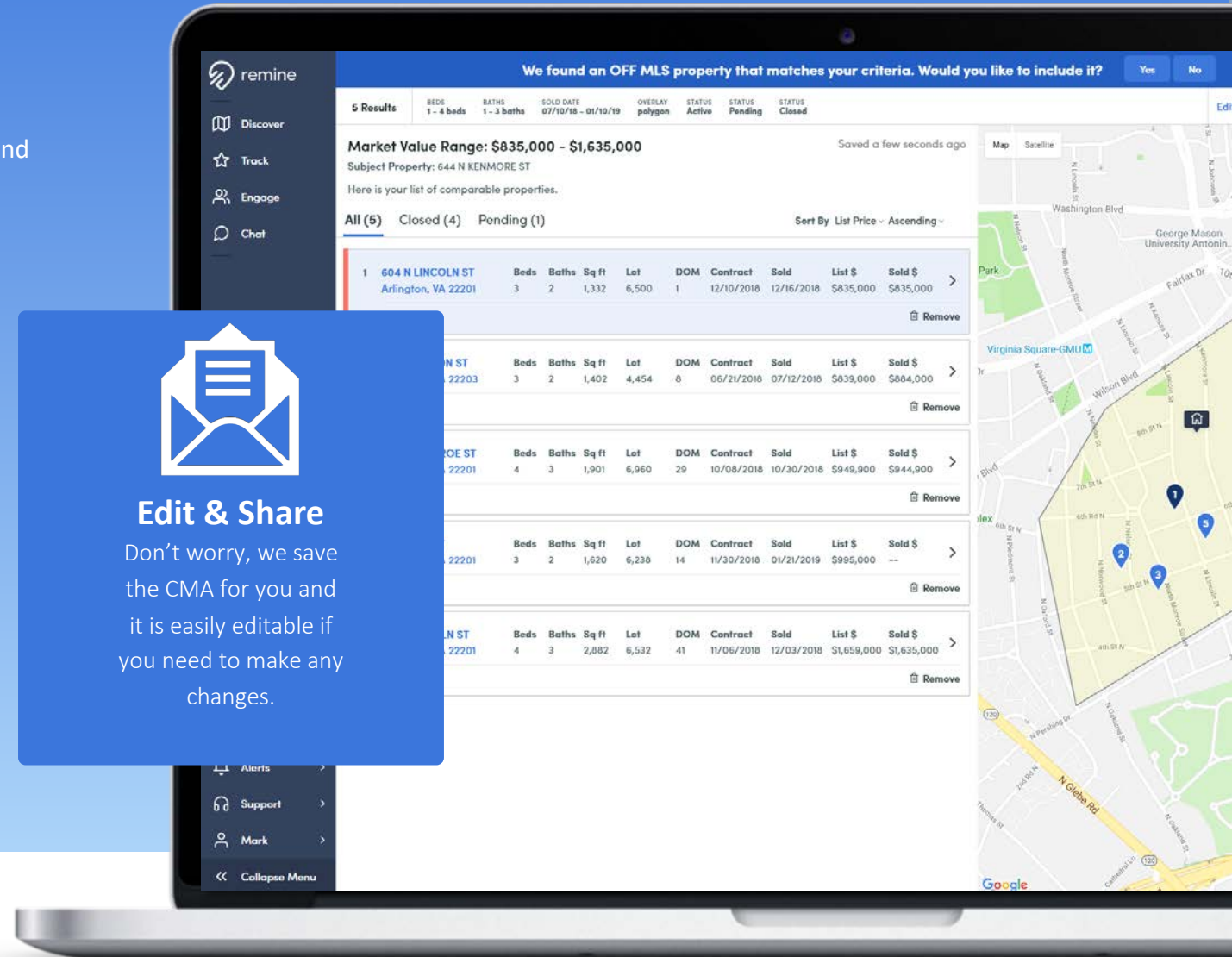
Customizable

Our CMA is easily customizable to help set you apart from the pack!



Edit & Share

Don't worry, we save the CMA for you and it is easily editable if you need to make any changes.



Saved Search

In addition to [tracking properties and people](#), you can save a search. When you save a search, you'll receive email notifications when new properties meet your search criteria, or when property characteristics change, like MLS Status or listing price.



Stay Connected

You will know when a new property meets your filter and search Criteria!



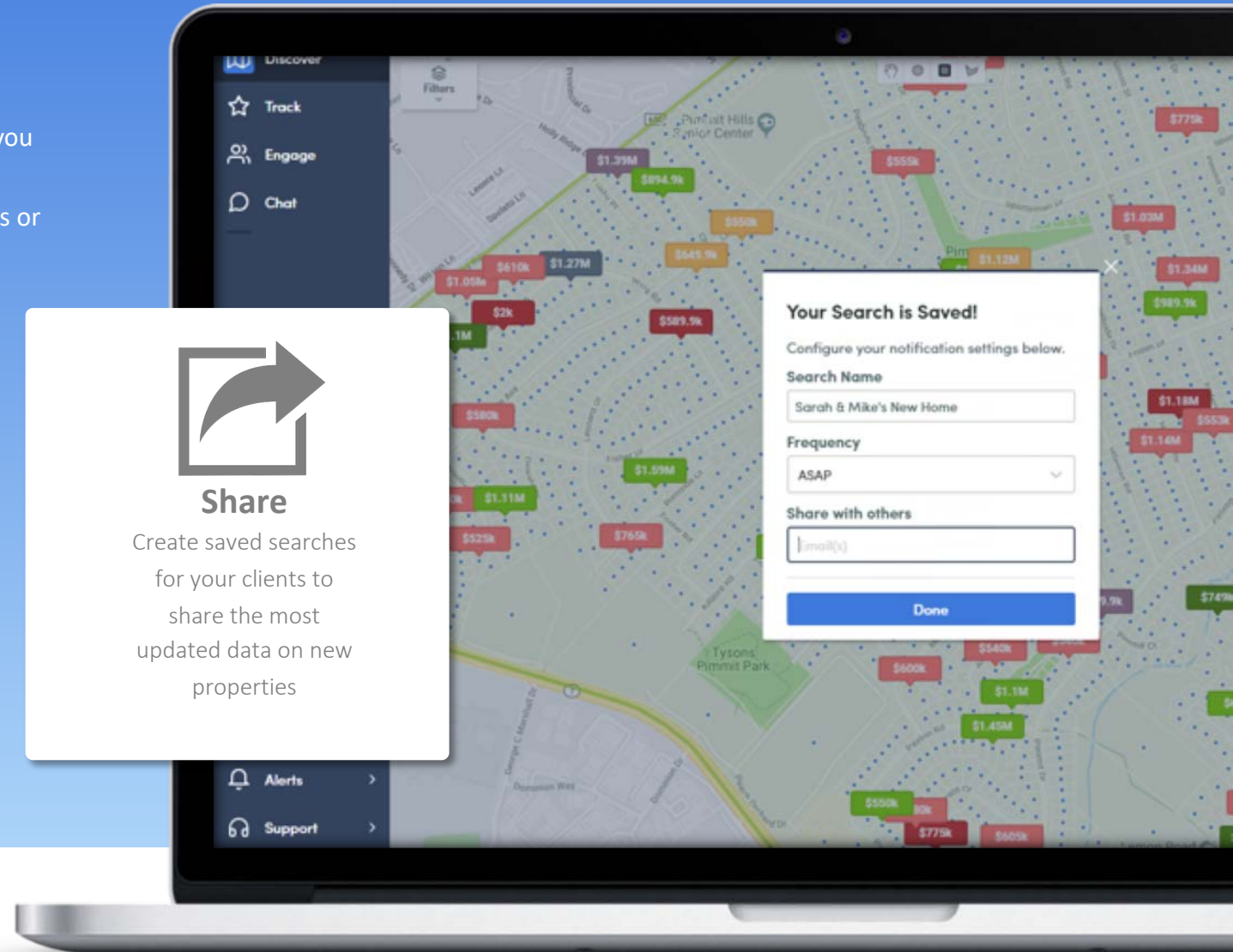
Receive Real-Time Updates

Since we are connected to your MLS we provide the most up-to-date information!



Share

Create saved searches for your clients to share the most updated data on new properties



Agent Portal

Offer the best real estate search to your current and future clients!



Customizable

Build your brand by customizing the page with your logo, photo, & personalized welcome message



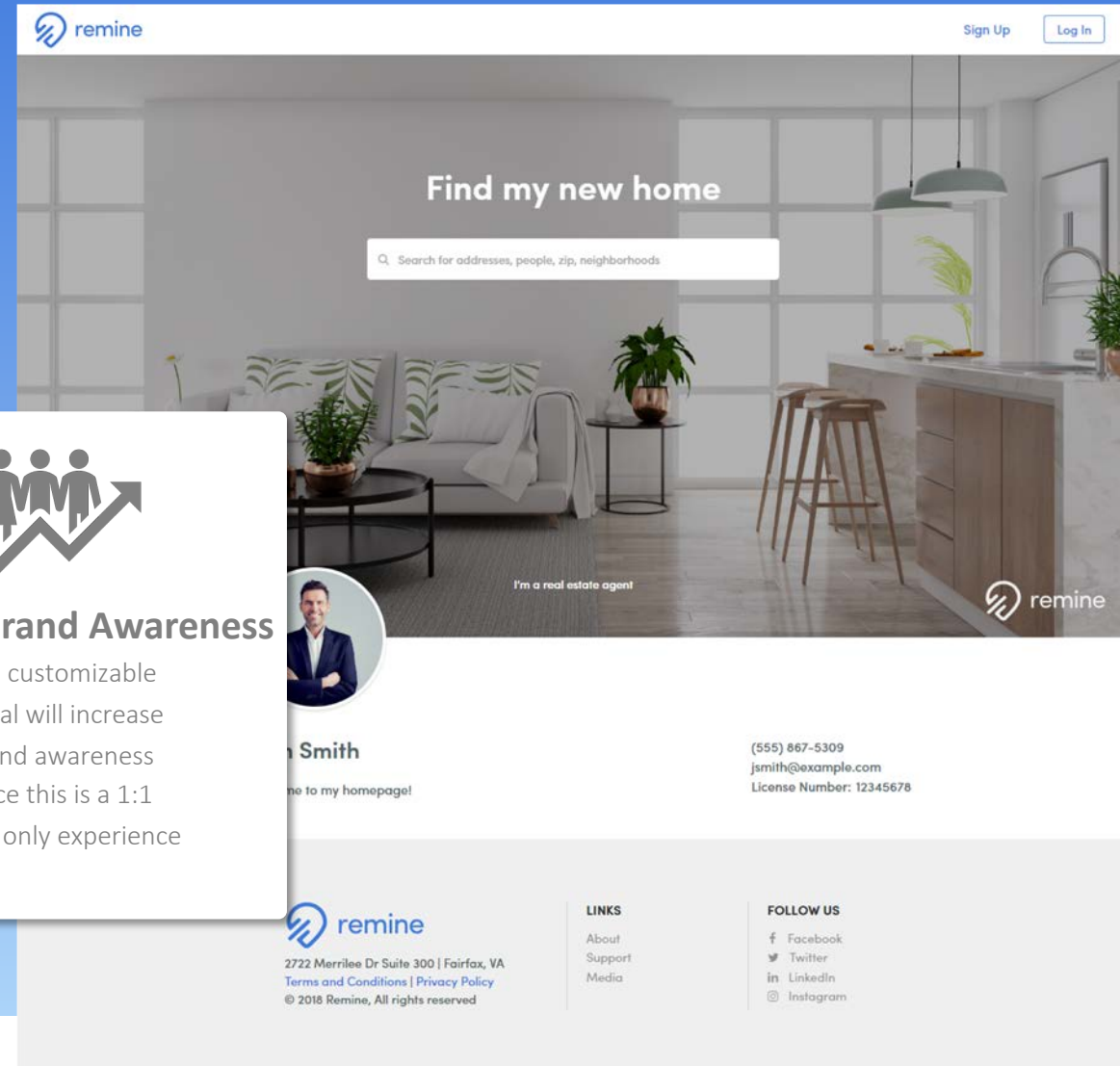
Single Ecosystem

One portal that gives clients access to MLS Data & their sponsored agent



Increase Brand Awareness

The customizable portal will increase brand awareness since this is a 1:1 invite only experience



Engage

Simply connecting you & your clients!



Connect

Collaborate with your clients more efficiently with a modern, initiation-only search experience.



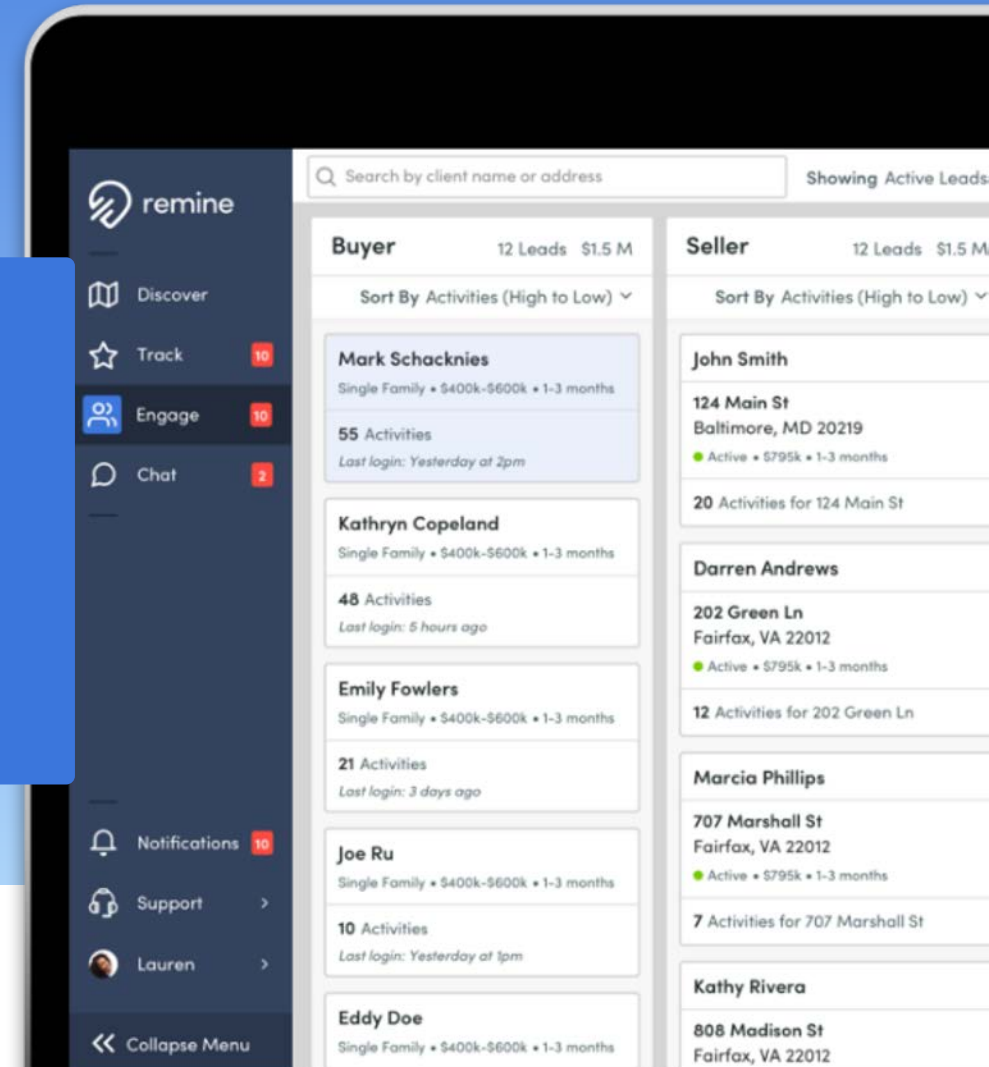
Engage

Engage with your clients through saved searches, chat & tour scheduling



Analyze

Access analytics on your clients' activities to help prioritize your time.



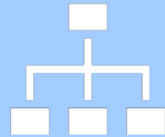
Lead Generation

Use data to work smarter



Filter

Use our filters to prioritize your time, so you can reach out to the right people at the right time



Organize

We organize our data into patterns to make predictions on what might happen so you don't have to



Patterns

Use Remine's algorithms to see who is likely to buy and sell based on these patterns





Let's Log in!

Remine Mobile

Use Remine on-the-go with our easy to use mobile app



Discover

View the familiar map and blue dots, filter & apply layers and track properties.



Track

View and manage tracked properties, narrow your properties and manage labels.



Chat

Chat with other agents on the go, without leaving the app.





Support

Chat, Phone, & Email Support
Available Mon-Friday 9am-5pm ET &
Support@remine.com
703-646-7522



Training Webinars

Available throughout the week
<http://bit.ly/reminetraining>



Remine User Community

Want to see how other agents are
using the tool? Join our Facebook
community group to gather more
insight

Training & Support

We are always here for you

help.remine.com ← check out our Support Center!